



POST OFFICE BOX 20336  
CHARLESTON, SC 29413-0336  
(843) 884-8750 FAX (843) 884-8935  
www.appliedtm.com

May 14, 2021

Mr. John Shirk, CFM, CZO  
Brunswick County Floodplain Administrator  
75 Courthouse Drive, Building I  
Bolivia, NC 28422

RE: Cost Proposal for Cawcaw and Little Cawcaw Swamp Detailed Flood Study

Dear Mr. Shirk:

ATM has developed the following estimated fees for the Scope of Work services outlined in Section 3 of ATM's qualifications submittal for Brunswick County.

---

### SUMMARY ESTIMATE OF PROFESSIONAL LABOR FEES

---

Table 1 presents the fee estimates for the described scope of services.

*Table 1: Professional Fee Estimate*

Task	Description	Professional Fee Estimate <sup>1</sup>
1	Baseline Model and GIS Data Collection	\$12,700
2	Field Survey and Reconnaissance	\$79,600
3	Detailed H&H Analyses	\$67,500
4	Final Mapping, Supporting Data, and Report Development	\$27,600
5	Meetings and Coordination	\$8,000
	Total	\$195,400

1. Fee estimate includes labor and field equipment charges only, at ATM's 2021 Standard Rates.

The anticipated professional services shall be billed to the County on a time and materials basis. Professional services will be billed by the hour according to ATM's 2021 rate sheet.

Reimbursable expenses shall be billed in addition to professional labor indicated in the above table.

If additional site visits, data collection, analysis, or meetings are needed, ATM will notify the County to receive authorization prior to executing the additional work.

---

## EXPANDED STUDY AREA AND SCOPE

---

It is understood the County also requests a fee estimate for the detailed study to include an expanded study area. The expanded study area would extend the detailed study of the Cawcaw Swamp to where it meets in with the Shingletree Swamp, and the Little Cawcaw Swamp farther upstream to the next watercourse (see Figure 1).

No modeling of the Shingletree Swamp is proposed. The revised Cawcaw Swamp SHFA (Special Flood Hazard Area) from the proposed detailed study will tie into the effective Shingletree Swamp SHFA.

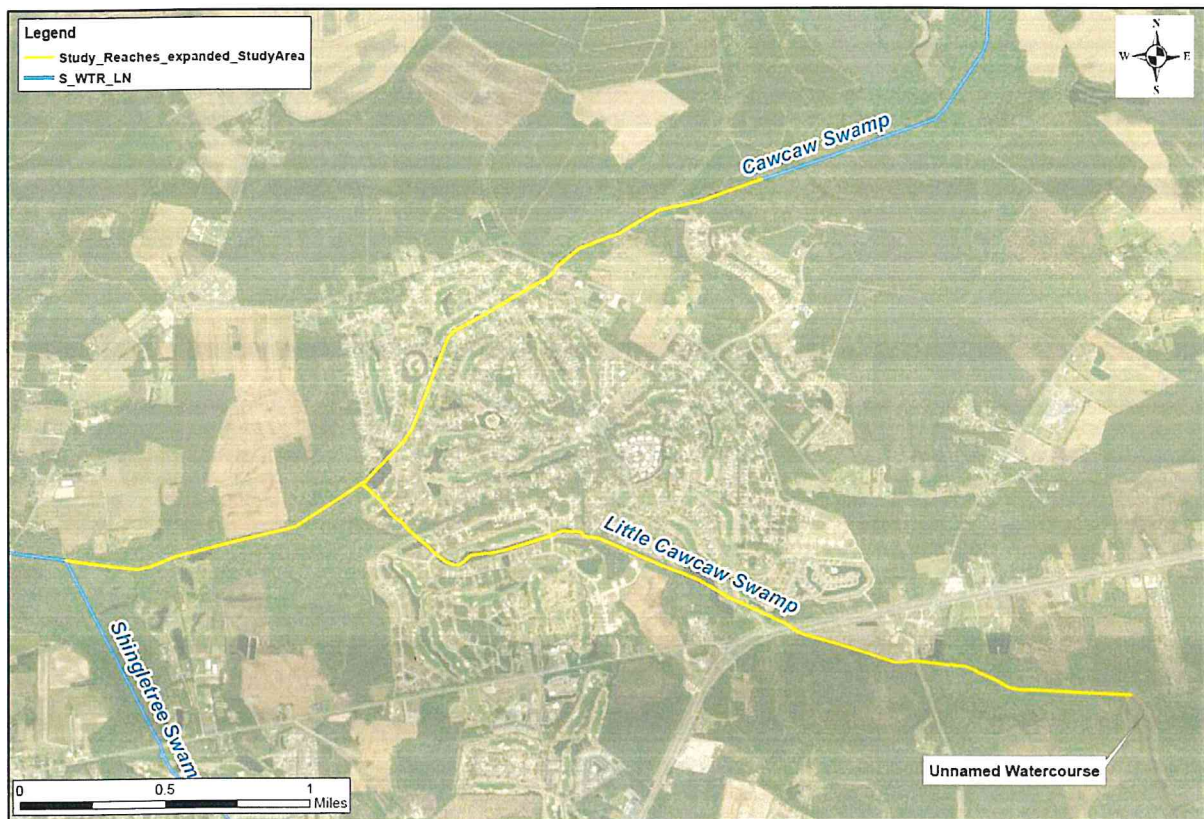


Figure 1. Expanded Study Area Streams for Detailed Study (Yellow)

The extended boundaries for detailed study represent an approximate 10% increase in total study stream length compared with the original RFQ study stream lengths.

As a result, the additional estimated fee is anticipated at 10% of the original Tasks 1-4 fees, due to additional needed surveyed cross-sections, baseline data collection, cross-section modeling, and additional mapping to the expanded study stream boundaries.

Table 2 presents the fee estimates for the described expanded study area scope of services. Table 2 costs are in addition to Table 1 fees.

*Table 2: Professional Fee Estimate for Expanded Study Area.*

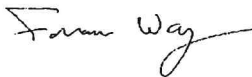
Task	Description	Professional Fee Estimate <sup>1</sup>
1	Baseline Model and GIS Data Collection	\$1,270
2	Field Survey and Reconnaissance	\$7,960
3	Detailed H&H Analyses	\$6,750
4	Final Mapping, Supporting Data, and Report Development	\$2,760
5	Meetings and Coordination	-
	Total	\$18,740

The anticipated professional services shall be billed to the County on a time and materials basis. Professional services will be billed by the hour according to ATM's 2021 rate sheet.

Reimbursable expenses shall be billed in addition to professional labor indicated in the above table.

If additional site visits, data collection, analysis, or meetings are needed, ATM will notify the County to receive authorization prior to executing the additional work.

Sincerely,



Fran Way, PE

